

Spacious End Unit Semi Private

374 Mainers Cove
Douglas



If you are looking for a spacious condo with a little more space than normal ... then look no further! The bright and airy unit is a total delight. Nicely landscaped with a two tiered wrap around deck.

When you are not personally using your unit, rent it. The association allows for vacation rentals. Let the renters help pay the mortgage payments.



Laura Durham
CRS, GRI, CBA, CIAS, CDPE
Broker/Owner
616.836.0113

Mill Pond Realty, Inc.
747 Water Street, P.O. Box 1093
Saugtauck, MI 49453
(269)857-1477
www.millpondrealty.com

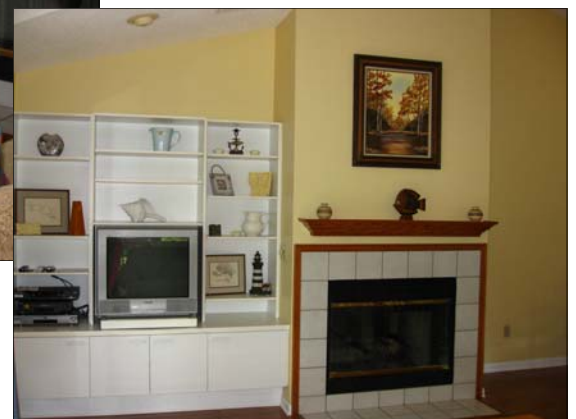


Every attempt has been made to assure accuracy of this information. Mill Pond Realty, Inc. will not be responsible for any omissions, errors, typographical mistakes or misinformation.



Large spacious great room with soaring ceilings, hardwood floors, fireplace and double sliders to a wrap around deck.

Entertain with ease in this open great room. You will enjoy evening cocktails and dinner with the fireplace as back drop or on the private deck with flowering and waterfront views.



Ideal 2nd Home Get-Away!



More than ample kitchen with a delightful with snack bar.



The soaring ceilings throughout the great room create a bright and spacious atmosphere. Relax around the dining table with family and friends, or better yet, on the deck overlooking the water and nature.



This condo is very clean and tastefully decorated inside awaiting you to make your own.



The master bedroom offers double sliders to a semi private deck with waterfront views. In addition to a master bath, there is also a 2nd full guest bath giving everyone the privacy they deserve.



This spacious end unit also comes with a double garage ... Unbelievable storage space in addition to room for your automobiles and all your toys. The finished space on the upper level has many possibilities ... use as a game room, craft workshop or a man cave!



A picture perfect place to relax and unwind! Whether you have lunch on the covered deck or kick back on a lawn chair as you sip on a cup of tea, the plush back drop is sure to please. The river and marsh area have a constantly changing scenery making it a great four season property.



Tower Marine is just a quick walk away where you'll find a refreshing swimming pool and play area for the children for your enjoyment. You'll love the convenient location just a short bike ride to the Chain Ferry, downtown Saugatuck/Douglas or the beautiful shores of Lake Michigan.

